

# Exeter City

## FOOTBALL CLUB



**EXETER CITY**

*versus*

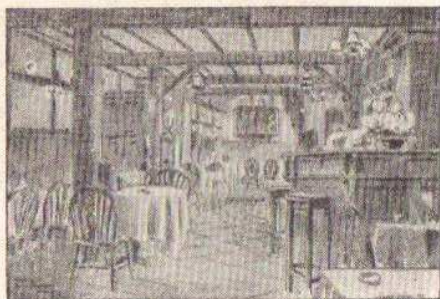
**SWINDON TOWN**

**Wednesday, April 23rd, 1958**

Kick-off 6.30 p.m.

OFFICIAL PROGRAMME 4d





## Watty's Restaurant

**NORTH STREET, EXETER**

(Next to Gaumont Cinema)

**Famous for Grills and Snack Counter**

CONTINUOUS SERVICE FROM 10 a.m.—10 p.m.  
(except Sundays)

Tel. 56063 Evening Table Bookings accepted

## A. E. WATSON

(EXETER) LTD.

*Structural Engineers*

1a, EXE BRIDGE

★ EXETER ★

Phone 55417/8

WORKS:

**MARSH BARTON  
EXETER**

Next Home Match

Saturday, April 26th

**GRAVESEND & N.**

Southern League

Kick-off 3.0 p.m.

For your NEW CAR or VAN consult

**DEVON MOTORS**

**135, Cowick Street, Exeter**

Telephone 77266/7



SALES AND SERVICE

Telephone 75815

*Austins*

FOR

OUTSIDE CATERING

**68, Bartholomew St. West  
EXETER**

*Official Caterers to Exeter City F.C.*

**THIS SPACE IS**

**FREE**

for use by local  
ORGANISATIONS OR  
TRADERS

for

single issue advertisements  
at a charge of

**ONLY 15/- per issue**

Apply: C. W. BARTLETT

c/o St. James' Park



# EXETER CITY FOOTBALL & ATHLETIC

CO. LTD.

Regd. Office : St. James' Park, Exeter

Tel. 54073

PRESIDENT : S. H. THOMAS

VICE-PRESIDENT : J. RIGBY

CHAIRMAN -

- A. S. LINE

## DIRECTORS:

A. T. FORD (Vice-Chairman), J. WARNE, H. L. WHITE, A. W. CRAWSHAW, J. F. WATTS

SECRETARY

G. J. GILBERT

MANAGER-COACH

FRANK BROOME

No. 24

Wednesday, April 23rd

1957/58

## Club Chatter *by Maurice Golesworthy*

When we played our first match of the season eight months ago we were saying that it was the beginning of a "new era" for Exeter City. That new era has, so far, not gone as well as we would have hoped, and now here we are about to see a game which marks the end of an era, yes, the end, for this is the last Third Division game to be played at St. James Park.

I don't mean that it will be the last Third Division game ever to be played here but it is the last of the Third Division in its present form.

To be more precise this is the 668th Third Division game played on this ground. How many of them have you seen? Did you see the first of these games which was played here on 28th August 1920? Our opponents were Brentford and we beat them 3-0. Let us hope that we can round off our 31st season of Third Division football at St. James Park with another 3-0 victory.

This season has brought a peculiar mixture of success and failure. Although we are still struggling to keep out of the re-

election zone and the club is taking a verbal beating from many of its supporters there have been some pleasing features about season 1957-58.

For instance just look at the top teams in the table today and then recall the displays put up by our lads when faced by those teams on this ground.

Only one of the top six teams beat us at St. James Park (Swindon still to play) and that was Brentford who won here 5-3 in our first Wednesday game of the season.

The next leading team to visit us was Norwich City, in October, and we were all set to run out with both points when their full-back, Ron Ashman, moved up into the attack and netted their equaliser in the closing minutes of the game. So the result was 2-2.

In December we had a visit from Brighton the team that are now favourites to win promotion. Remember we had shocked them by drawing 2-2 on their ground early in the season and we gave them a bigger shock at St. James Park beating them 2-0 with goals by Rapley and Nicholls.



TELEVISION — F.M. RADIO — HI-FI — RECORDS  
& DOMESTIC ELECTRICAL EQUIPMENT



## FILDEWS

### 99, Fore Street, EXETER

OVER 25 YEARS EXPERIENCE AT YOUR SERVICE





# **PAUL** MODERN MEN'S HAIRDRESSING IN MODERN SALOON

Full and Expert Service at Moderate Charges  
FOR SMARTNESS SAKE VISIT US SOON  
PRIVATE SALOON FOR YOUNG CHILDREN

Phone 55781 for Appointment

**35, HEAVITREE ROAD - EXETER**

(Near Swimming Baths)



## **Club Chatter—Continued**

So we rounded off one of the best Christmas-week programmes we have ever had by collecting six points from the three games. Fulham was the only other team in the Football League to do the same.

But there was better to come, and I consider that the two home games played here in the month of February are among the best displays seen from any City side since the war.

The first of those games was against one of the top six—Plymouth Argyle. No-one could have wished for a more exciting and entertaining local derby. I don't need to remind you that we won 4-2.

As good a game as that was. Our next home match was even better. I doubt whether there has ever been a more thrilling packed 45 minutes than was provided by Exeter and Colchester United, in the first half.

Ted Calland got three goals that afternoon and Arnold Mitchell got one of his best goals for the City by chasing a loose ball nearly 30 yards before shooting in. At half-time we led 4-2 and in the second half most of the honours went to our defence for withstanding Colchester pressure so well that the visitors could only get one more

goal from a host of all-out attacking moves.

But to return to our top six. So far we have lost to one, drawn to another, and beaten two. The last of these teams to visit us before this evening was Reading on March 22nd. Here again our lads gave a display which belied our lowly League position.

No doubt Reading were one of the poorest of the leading teams to visit us this season, but don't forget that the zest and speed with which the City men played that afternoon had a lot to do with making Reading look third rate.

Unfortunately, however, our attack missed several good chances in that game and though we should have won comfortably we had to be satisfied with a 1-1 draw.

I don't like to use the term "bad luck" to make an excuse for any of the defeats our team has suffered this season. It wasn't "bad luck" that prevented us from beating Reading but—let us admit it—bad shooting.

However, I am going to describe last Saturday's defeat by Watford as "bad luck." Watford really must be our bogey team for this was their third consecutive win at St. James Park and all by the same 2-1 result.

## **Your Goal after the Match**

**The GEORGE & DRAGON BLACKBOY ROAD**

BASS ON DRAUGHT    GEORGE F. MILFORD, Proprietor    CITY ALES & STOUTS

Most of the nationally known bottled beers stocked

**NORRINGTON'S of EXETER**

Tel. 75315    For POWER FARMING EQUIPMENT of all kinds

ANY MAKE SUPPLIED

Largest Stock of Spares in the West



# MOTORCYCLISTS !

MAKE



YOUR GOAL

THE LEADING MOTORCYCLE DEALERS OF THE WEST

TELEPHONE  
58241

**P. PIKE & CO. LIMITED**

And  
46, UNION STREET  
PLYMOUTH

ALPHINGTON ST. ★ EXETER

## Club Chatter—Continued

It is a long time since we have seen a game in which a team so outplayed their opponents and yet drop both points.

While we swarmed around the Watford goal almost continually from start to finish, hit the framework twice and had the ball kicked off their goal-line by a full-back Watford never really looked dangerous and yet somehow they contrived to get two goals and we could only net one.

Fancy running into such bad luck at a time when we so desperately need every point we can get. But that is the way it goes. They say its tough at the top, but we know that it is tougher at the bottom. It is easy enough to get there but every game is like a cup-tie to a team trying to climb away from the bottom.

This evening's game is going to be another with a cup-tie atmosphere because the points are vital to both teams.

Swindon Town now have only an outside chance of promotion. On the other hand they are almost certain to qualify for talent money and, of course, the better the position the more they will collect.

As a matter of interest the top team in each section of the Third Division divides £550 among the players, the runners-up £440, Third £330, Fourth £220.

When they came to St. James Park just

over 12 months ago the Railwaymen were occupying the same position in the League table as we do today, and we beat them 3-2 with goals by John (2) and Harvey. Richards and Edwards scored for Swindon. The teams in that game were:—

**Exeter City**—Hunter; Lackenby, Ferrier; John, Harvey, Simpson; Buckle, Currie, Mitchell, Willis, Rees.

**Swindon Town**—Burton; Cross, Earl; Fountain, Jack, Pembury; Owen, Richards, Micklewright, Edwards, Darcy.

It is surprising to see that although Swindon Town are right up at the other end of the table this time they still include the majority of last season's players in their line-up.

The two most notable newcomers to the Swindon team this season are left-back Walter Bingley, signed from Sheffield Wednesday, and 24-year-old centre-forward Jim Kelly, whom they secured from Preston North End in February.

Long-service man is Maurice Owen. He joined them 12 years ago and if chosen for this evening's game we shall probably see him in his new position of right-half back. By now Maurice cannot be far short of his 400th Football League appearance for the Railwaymen. A first class club man.

## Knapex Paints made by

# T. KNAPMAN & CO., LTD.

## EXETER

Distributors of DULUX, BERGERMASTER, Etc.



## Emery's of Exeter Ltd.

*The Motor Cycle Specialists*

COMPLETE OVERHAULS TO ANY  
TYPE OF MOTOR CYCLE

**SALES - SPARES - REPAIRS**

Agents for the leading makes including  
A.J.S., JAMES, MATCHLESS, VINCENT  
& LAMBRETTA—WATSONIAN SIDECARS

11, Blackboy Rd., Exeter Tel. 55767  
All Saints Rd., Sidmouth Tel. 1163

*Send your enquiries for any  
kind of Building Work,  
Repairs or Decorations  
to*

**A.W. (Billy) CRAWSHAW**

Building Contractor  
**BETTYS MEAD  
EXETER**

Phones Exeter 55731 — 56321 — 74970



**FOOTBALL  
CLOTHING  
and  
EQUIPMENT**  
*for Clubs and  
all Players*

**WEBBERS SPORTS**

51, HIGH STREET, EXETER  
and at TORQUAY and TAUNTON

**County Steam  
Laundry**

**EXWICK . . . EXETER**

Tel. 54965

*Modern Launderers  
and Dry Cleaners*

Contractors to  
**EXETER CITY FOOTBALL CLUB**



PHONE: EXETER 74039

**Tim Burr**

Nothing is **Scored** by paying the  
so just follow the crowd and make  
best in . . . **TIMBER • PLYWOOD •**  
**WALLBOARD**

★ **A.S.L. TRADING**

THE TIP  
OLD TA  
ALPHINGT

**BARTLETT & S**

**EXETER CITY**

Right

2  
Foley

4  
Mitchell

7  
Wilson

8  
Hill

Referee :  
Mr. C. W. KINGSTON  
(Newport)

Linesmen :

Mr. D. T. Markall (Red Flag)  
Mr. L. D. Mahoney (Yellow Flag)

11  
Darcy

10  
Edwards

6  
Owen

3  
Bingley

Left

**Blue Shirts, White Shorts**

Red  
Hunt

5  
Olive  
9  
Callan

**NEW  
WORK**

9  
Bell  
5  
Hills

Burt

**COWICK STREET**

You will be right not to dispute the referee's d  
You will also be right in visiting —

**HAMMETT'S D  
SIDWELL STREET**

Specialis

Own make **CREAM, BUTTE  
MEAT PRODUCTS—  
PRIME LOCALLY PRODUCED BEI**

**OUR PORK SAUSAG**



## rr Scores !

g the **penalty** of **fouling** the job . .  
make **A.S.L** your **Goal** for all that's  
**DD • DOORS • FLOORING • FENCING**  
**BOARDS, ETC.**



**ING CO. (EXETER) LTD.**

**TIMBER PEOPLE**  
**TANNERY YARD**  
**INGTON - EXETER**

**SON (EXETER) LTD.**

**Red and White Shirts, White Shorts**  
**hunter**

**Left**  
3 McDonald  
5 Oliver  
9 alland  
6 Harvey  
10 John  
11 Dale



**Last Seasons Result :**  
Exeter City 3  
Swindon Town 2

9 Kelly  
5 Holson  
8 Micklewright  
4 Clayton  
7 Richards  
2 Neal  
Burton

**SWINDON TOWN**

**REET • EXETER**

e's decision

**DAIRIES LTD.**  
**ET & BRANCHES**

ecialists in

**TTER & CHEDDAR CHEESE**

**BEEF, LAMB & DAIRY FED PORK**

**USAGES ARE FAMOUS**

For **ALL**  
**Timber and Building Materials**  
**The**

**DEVON TRADING COMPANY**

**EXETER Ltd.**

**BRANCHES THROUGHOUT DEVON**

**Tel. EXETER 71391**

*When in Torquay . .*

**BELGRAVE**  
**HOTEL**

**Centre Sea Front**  
(G. H. GILLIN)

**FULLY LICENSED**  
**LUNCHEONS & DINNERS**

**HOLMAN HAM**  
**& CO., LTD.**

**Family Chemists**

**EXETER**

South Street  
St. Ann's Pharmacy, Sidwell Street  
Fore Street, Heavitree  
Polsloe Bridge — Cowick Street  
Glass House Lane, Countess Weir  
Birchy Barton Hill

*Also BRANCHES IN*  
**DEVON, SOMERSET & DORSET**

**BOOK THIS DATE!**

**Saturday, May 3rd, 1958**

**F.A. CUP FINAL**

**DAY EXCURSION BOOKINGS TO**

**LONDON (PADDINGTON)**

**Depart : Exeter (St. David's) 1.40 or 8.54 a.m.**

**Return**  
**Fare**

**BRITISH RAILWAYS**

**36/-**  
2nd class





Telephone 74458

**52, ALPHINGTON ROAD, EXETER**  
**SELF-DRIVE HIRE CARS**  
**FOR LONG OR SHORT PERIODS**

## Our Visitors

The Swindon Town team will probably be chosen from the following:—

**BURTON, SAM (Goalkeeper).** A local product who has spent the whole of his professional career with Swindon. Now in his 12th season and has missed very few games in recent years. Born Swindon. 6ft. 0ins. 12st. 0lbs.

**NEAL, JOHN (Right-back).** Born North Shields. Was with Hull City in the Second Division and then had a season with Kings Lynn before moving to Swindon last summer. 5ft. 8ins. 10st. 10lbs.

**BINGLEY, WALTER (Left-back).** Signed early this season from Sheffield Wednesday. Had been over two seasons with the Wednesday having joined them from Bolton Wanderers. Born Sheffield. 5ft. 11ins. 11st. 9lbs.

**CLAYTON, LEW (Right-half).** Born Barnsley. An experienced wing-half who has played for Carlisle United, Barnsley, Queen's Park Rangers, and Bournemouth before joining Swindon last summer. 5ft. 9ins. 11st. 3lbs.

**OWEN, MAURICE (Right-half).** Another experienced player who has been with Swindon since joining them from Abingdon

in 1946. Better known as a centre-forward but has recently been filling a wing-half berth. Born Abingdon. 5ft. 10ins. 11st. 3lbs.

**HUDSON, GEORGE (Centre-half)** Joined Swindon from Portsmouth ten years ago and has now made well over 300 appearances for them. Born Havant. 6ft. 1ins. 13st. 0lbs.

**FOUNTAIN, JACK (Left-half).** Born Leeds. Signed from Sheffield United last year. Had been seven seasons at Bramall Lane. 5ft. 9ins. 11st 2lbs.

**SKULL, JOHNNY (Outside-right).** Given a free-transfer by the Wolves in 1956 this player went out of the League for a season until Swindon signed him this term.

**RICHARDS, JACK (Inside-right).** Spotted when playing for an army team in the locality. Became a part-time professional with Swindon after his demob two years ago. Born West Bromwich. 5ft. 11ins. 12st 0lbs

**KELLY, JIM (Centre-forward).** Born Bellshill, Lanarkshire. Made his debut with Swindon on March 1st last at Torquay. Signed from Preston North End. He was previously with Peterborough United. 5ft. 11½ins. 12st. 5lbs.

**Tel. 74669**

**Tel. 72750**

# IMPERIAL HOTEL

## EXETER

**LUNCHEONS - DINNERS - SPECIAL FUNCTIONS**  
**LICENSED - LARGE CAR PARK**



SUITCASES — TRUNKS — BRIEF CASES — SPORTS SEATS  
 HANDBAGS — UMBRELLAS — FANCY LEATHER GOODS  
 RE-COVERS REPAIRS

**R.H.CUMMINGS LTD**

**34, PRINCESSHAY, EXETER**

Telephone 73886

## LEAGUE TABLE

(Up to and including Monday, April 21st)

### THIRD DIVISION (South).

		P	W	D	L	F	A	P.
Plymouth ..	..	45	24	8	13	65	47	56
Reading ..	..	45	21	13	11	79	50	55
Brighton ..	..	42	22	11	9	79	61	55
Swindon ..	..	44	20	14	10	77	49	54
Norwich ..	..	45	19	15	11	74	67	53
Brentford ..	..	43	21	10	12	75	54	52
Southampton ..	..	43	20	10	13	104	66	50
Southend ..	..	43	19	11	13	79	52	49
Bournemouth ..	..	43	20	8	15	76	69	48
Newport ..	..	44	17	13	14	70	63	47
Q.P.R. ..	..	44	17	13	14	60	64	47
Colchester ..	..	44	16	13	15	72	75	45
Northampton ..	..	43	18	6	19	82	70	42
Watford ..	..	43	13	16	14	57	66	42
Port Vale ..	..	43	16	9	18	59	49	41
Crystal Palace ..	..	44	14	13	17	65	66	41
Shrewsbury ..	..	44	14	10	20	48	68	38
Coventry ..	..	44	13	12	19	58	77	38
Aldershot ..	..	44	11	15	18	55	87	37
Walsall ..	..	44	12	9	23	54	72	33
Torquay ..	..	43	11	11	21	45	69	33
Millwall ..	..	44	11	9	24	61	86	31
Exeter City ..	..	44	11	9	24	57	97	31
Gillingham ..	..	43	11	8	23	47	78	30

## Mitchells of Exeter

JEWELLERS & SILVERSMITHS

AGENTS FOR ALL FINE WATCHES

Specialists in Silver and Electro Plate —

— Sports Cups and Trophies

ST. STEPHEN'S HOUSE

BEDFORD STREET, EXETER



# H. L. WHITE & SONS, LTD.

RIVERMEAD ROAD, EXETER

Tel. EXETER 56884

50 Private Sites available in Exeter

BUILDING  
CONTRACTORS

CHURCH PATH, TOPSHAM

Tel. TOPSHAM 3022

3 Bedroomed Houses from £1,900

## BYSTOCK HOTEL (Near Clock Tower) EXETER A.A. R.A.C.

The Hotel has over 40 bedrooms, all of which are equipped with modern amenities.

Established many years ago, it is known and appreciated for its friendly atmosphere.

*The Hotel is open to non-residents for all meals, and being fully licensed, has a bar lounge where a drink can be enjoyed under pleasant circumstances—this apart from meals.*

A Room is available for Meetings, seating capacity approximately 50.

Telephone: Management 72709

Telegrams: Bystock, Exeter

## Our Visitors—Continued

**DARCY, ARNOLD** (Inside or outside-left). Born Blackburn. Joined Swindon from Wigan Athletic in October 1956. 5ft. 8ins. 11st. 0lbs.

**EDWARDS, BOB** (Inside-left). Born Guildford. Was an amateur with Woking, Guildford City and Birmingham before

turning professional with Chelsea. Transferred to Swindon in 1954. 6ft. 0ins. 11st. 7lbs.

**MICKLEWRIGHT, ANDY** (Outside-left). Was with Bristol Rovers and then Bristol City before moving to Swindon in 1954. Was originally a centre-forward. Born Birmingham. 5ft. 8ins. 11st 6lbs.

## GOALSCORERS

Division III—Calland 15, Churms 8, Nicholls 8, Rapley 4, Robinson 4, Mitchell 4, Currie 2, Harvey 2, Atkinson 2, Hill 2, Wilson 2, Foley, Atkins, Rees and John, one each. Total 57.

Southern League and Cup—Hill 24, Calland 10, T. Skuse 5, Wilson 4, T. Atkins 3, Rapley 2, Waterman 2, Harvey 2, Beer 2, Rees 2, Robinson, Foley, Atkinson, Dale, Grinney and A. Cruz, one each. Total 62.

F.A. Cup—Calland 1.

Devon Professional Championship—Robinson 2, Calland 1.

The "Well Dressed Man" shops at

## Exeter CO-OPERATIVE Society

TAILORING DEPARTMENT - First Floor - EASTGATE - EXETER

## Clock Tower Cafe

(EXETER) LTD

Devonshire Cream Teas from 2/-

TWO RESTAURANTS AND A SNACK BAR

Phone 72119

Luncheons from 3/3

12 noon—2 p.m.

EVENING ESPRESSO COFFEE BAR



BEFORE AND AFTER THE GAME . . . TRY **THE BROOK GREEN TAVERN** WELL STREET One minute from here

SNACKS ALWAYS AVAILABLE

**ST. ANNE'S ALES**

**BASS ON DRAUGHT**

Your Host and Hostess

Mr. and Mrs. W. B. PRICE

### THIRD DIVISION (South)

1957			For	Agst.
Aug. 24	Southend United	H	0	5
" 27	Brentford	A	0	1
" 31	Brighton & H.	A	2	2
Sept. 4	Brentford	H	3	5
" 7	Southampton	H	2	2
" 11	Millwall	H	2	0
" 14	Newport County	A	0	0
" 16	Millwall	A	0	3
" 21	Port Vale	H	1	0
" 25	Gillingham	H	1	3
" 28	Plymouth Argyle	A	0	1
Oct. 2	Gillingham	A	1	1
" 5	Aldershot	H	3	0
" 12	Colchester United	A	0	3
" 19	Norwich C.	H	2	2
" 26	Bournemouth	A	1	2
Nov. 2	Walsall	H	2	1
" 9	Coventry C.	A	1	6
" 16	F.A. Cup Bath C.	A	1	2
" 23	Reading	A	0	2
" 30	Northampton T.	H	0	1
Dec. 7	(2) Watford	A	4	5
" 14	Crystal Palace	H	0	1
" 21	Southend U.	A	0	2
" 25	Torquay U.	A	3	1
" 26	Torquay U.	H	5	1
" 28	Brighton & H.	H	2	0
1958				
Jan. 4	(3) Swindon T.	A	1	5
" 11	Southampton	A	0	6
" 18	Newport C.	H	0	2
Feb. 1	Port Vale	A	2	3
" 8	Plymouth A.	H	4	2
" 15	(5) Aldershot	A	2	2
" 22	Colchester U.	H	4	3
Mar. 1	(6) Norwich C.	A	2	3
" 8	Bournemouth	H	1	2
" 15	Walsall	A	0	3
" 22	Reading	H	1	1
" 29	Crystal Palace	A	0	2
Apr. 4	Queen's Park R.	A	1	1
" 5	Coventry City	H	1	0
" 7	Queen's Park R.	H	0	0
" 12	Northampton T.	A	0	9
" 16	Shrewsbury T.	H	2	1
" 19	Watford	H	1	2
" 23	Swindon T.	H		
" 26	Shrewsbury T.	A		

### SOUTHERN LEAGUE

1957			For	Agst.
Aug. 24	Gloucester C.	A	0	2
" 28	Dartford	H	1	1
" 31	Lovell's A.	H	1	2
Sept. 4	Weymouth S.L.C.	A	1	2
" 10	Weymouth S.L.C.	H	2	2
" 14	Poole Town	H	0	1
" 18				
" 21	Guildford C.	A	1	0
" 26	Yeovil T.	A	2	2
" 28	Bedford T.	H	0	5
Oct. 2	Kidderminster H.	H	2	2
" 5	Kidderminster H.	A	1	5
" 7	Worcester C.	A	2	6
" 12	Headington U.	H	2	3
" 19	Bedford T.	A	0	6
" 23	Dartford	A	4	1
" 26	Barry T.	H	1	1
Nov. 9	Cheltenham T.	H	0	0
" 16	Merthyr Tydfil	A	2	1
" 23	Yeovil T.	H	3	3
" 30				
Dec. 7	Tonbridge	H	3	0
" 14	Gravesend & N.	A	3	4
" 21	Gloucester C.	H	2	1
" 25	Weymouth	H	2	0
" 26	Weymouth	A	1	7
1958				
Jan. 4	Kettering T.	H	5	1
" 11	Worcester C.	H	3	1
" 18	Poole Town	A	1	2
" 21	Yeovil T. (SL Cup)	A	0	1
" 25	Kettering T.	A	0	2
Feb. 1	Guildford C.	H	5	0
" 13	Lovells Athletic	A	0	2
" 15	Chelmsford C.	H	1	3
" 22	Headington U.	A	1	1
Mar. 1	Bath City	H	1	4
" 8	Barry Town	A	2	8
" 15	Hereford U.	H	1	5
" 22	Cheltenham T.	A	0	1
" 29	Merthyr Tydfil	H	3	1
Apr. 4	Hastings U.	H	0	3
" 5	Hereford U.	A	1	0
" 7	Hastings U.	A	1	4
" 12	Tonbridge	A	1	1
" 24	Bath City	A		
" 26	Gravesend & N.	H		
May 3	Chelmsford C.	A		

For the BEST RESULTS TRY

# ELLISCARS

SCHOOL OF MOTORING

**23/24 QUEEN STREET, EXETER Phone 58000**

Proprietor: Rufus Davies, R.A.C. Reg., Inst.





## Half-Time Scores

*This service is supplied and operated by The Grecians' Association*

A  
B  
C  
D  
E  
F  
G  
H  
I

K  
L  
M  
N  
P  
Q  
R  
S  
T

Follow the game with Sunday's

# TOP TEAM

of sports writers—every week in the

★  
SOCCER  
REPORTS  
WITH A  
SPARKLE



# EMPIRE NEWS

*and Sunday Chronicle*